



Rural Development & Soil Health

Region Emilia-Romagna perspective in the framework of
Italy's CAP Strategic Plan



Contents

- Emilia-Romagna Agri: an overview
- Soil health issues in practice
- Rural development toolbox
- Some results
- CAP strategy 23-27: Italy vs. Emilia-Romagna
- Next opportunities



**CARBON 4
SOIL QUALITY**

**Interreg
Euro-MED**



Co-funded by
the European Union



**PIANO STRATEGICO
DELLA PAC**
IL FUTURO DELL'AGRICOLTURA SOSTENIBILE



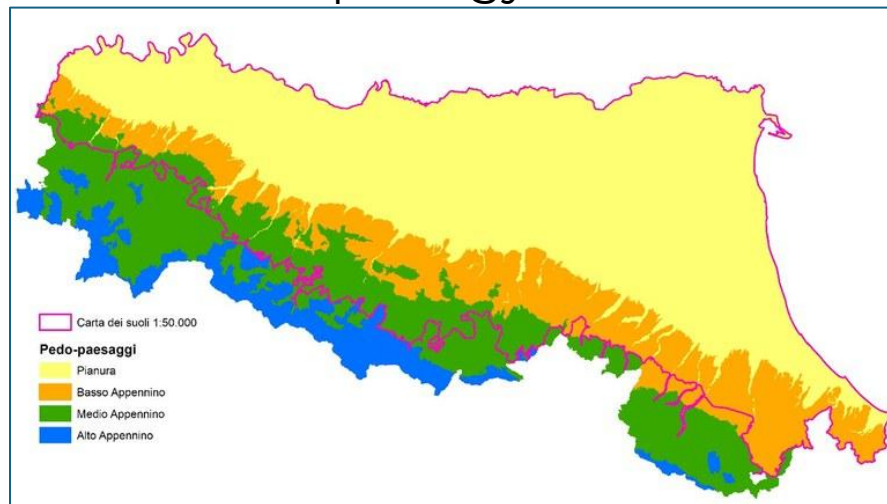
**SVILUPPO RURALE
EMILIA-ROMAGNA**
2023-27



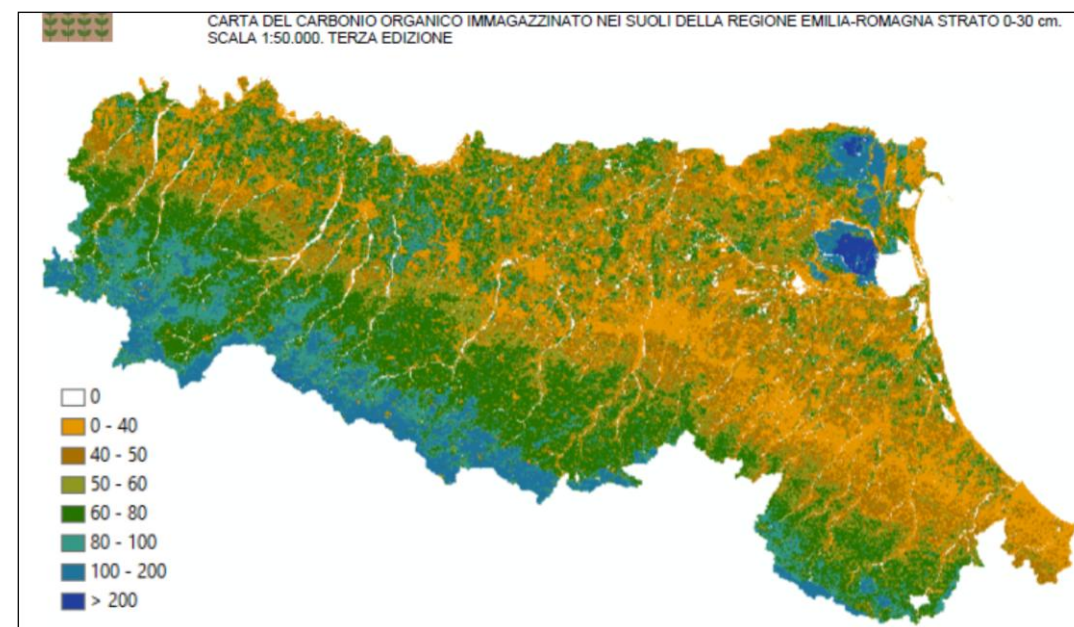
Emilia-Romagna: an overview



morphology



C stock (0-30 cm depth)



The Apennine chain covers half the total Area of the region.

Mean C stock 52 t/ha (90 tOM/ha): great differences



**CARBON 4
SOIL QUALITY**

**Interreg
Euro-MED**



Co-funded by
the European Union



**PIANO STRATEGICO
DELLA PAC**
IL FUTURO DELL'AGRICOLTURA SOSTENIBILE



**SVILUPPO RURALE
EMILIA-ROMAGNA 2023-27**



E-R Agri output by product group

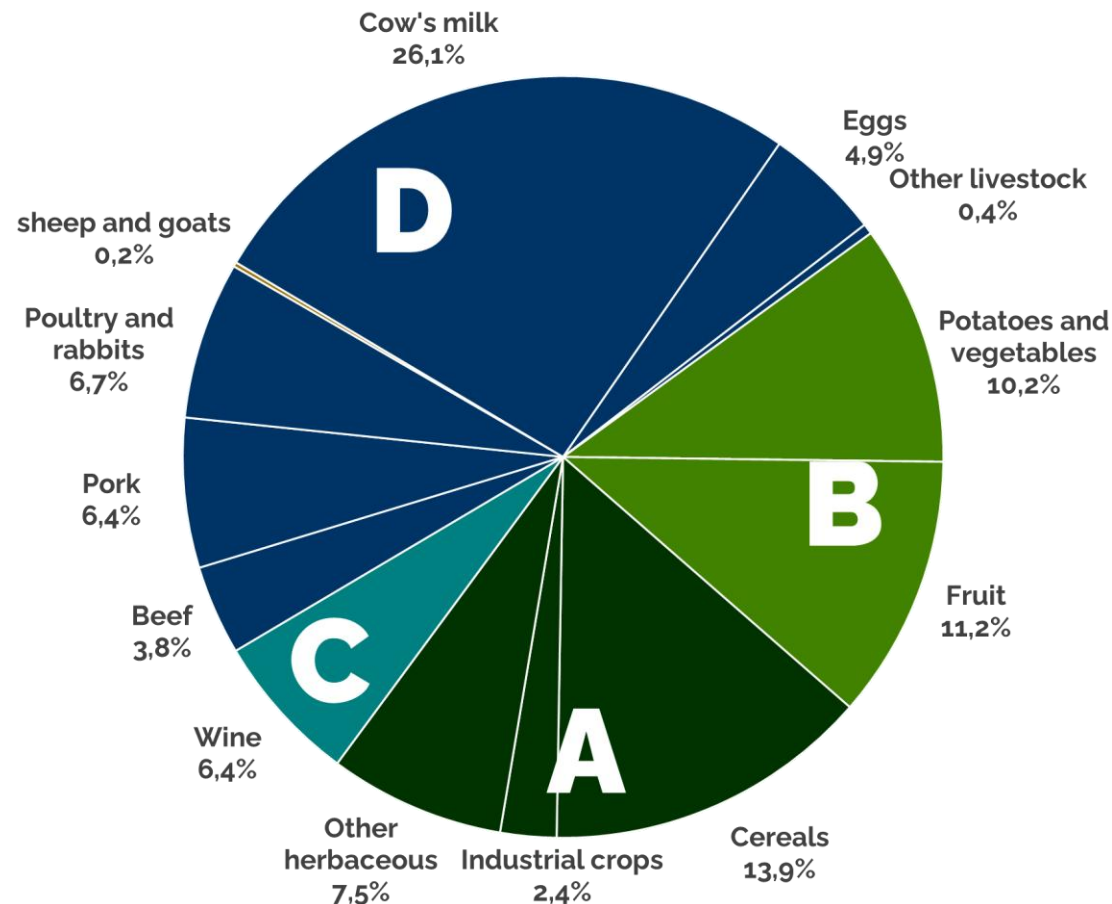
5,8 billions€ (at the farm gate)
divided in:

A 23,7% cereals, industrial crops and other

B 21,4% fruit and vegetables

C 6,4% wine

D 48,5% animal production



CARBON 4
SOIL QUALITY

Interreg
Euro-MED



Co-funded by
the European Union



PIANO STRATEGICO
DELLA PAC
IL FUTURO DELL'AGRICOLTURA SOSTENIBILE



SVILUPPO RURALE
EMILIA-ROMAGNA
2023-27



E-R Agri: QUALITY as a mission

FOOD

19 PDO
Protected
Designation of Origin



25 PGI
Protected Geographical
Indication



WINE

21 PDO
Protected
Designation of Origin



9 PGI
Protected Geographical
Indication



CARBON 4
SOIL QUALITY

Interreg
Euro-MED



Co-funded by
the European Union



PIANO STRATEGICO
DELLA **PAC**
IL FUTURO DELL'AGRICOLTURA SOSTENIBILE



SVILUPPO RURALE
EMILIA-ROMAGNA
2023-27

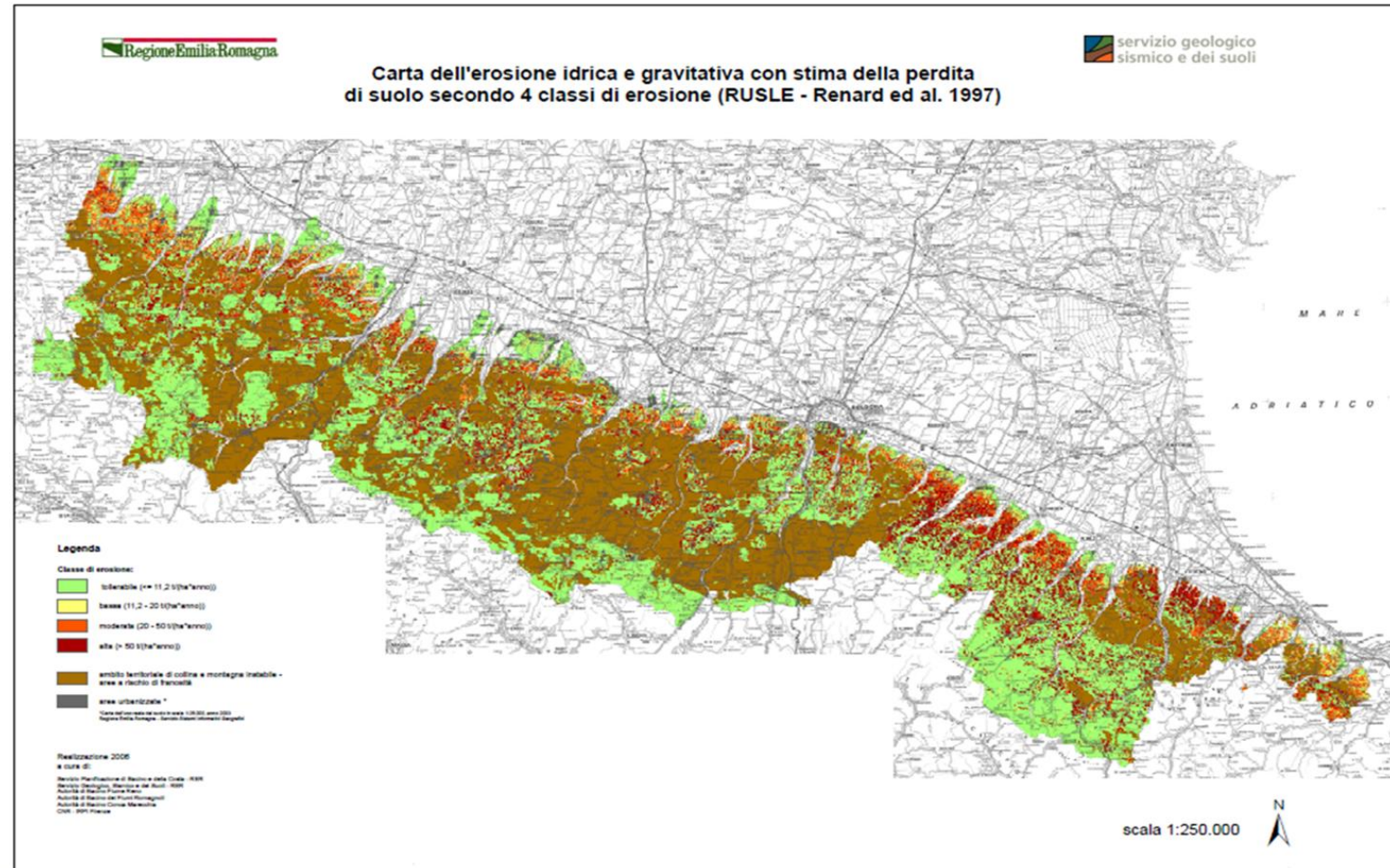


Soil threats: water erosion

Low/medium hilly area:

Land use:
vineyards, orchards

Erosion rate:
20-50+ t/ha*year



**CARBON 4
SOIL QUALITY**

**Interreg
Euro-MED**



Co-funded by
the European Union



**PIANO STRATEGICO
DELLA PAC**
IL FUTURO DELL'AGRICOLTURA SOSTENIBILE



**SVILUPPO RURALE
EMILIA-ROMAGNA**
2023-27

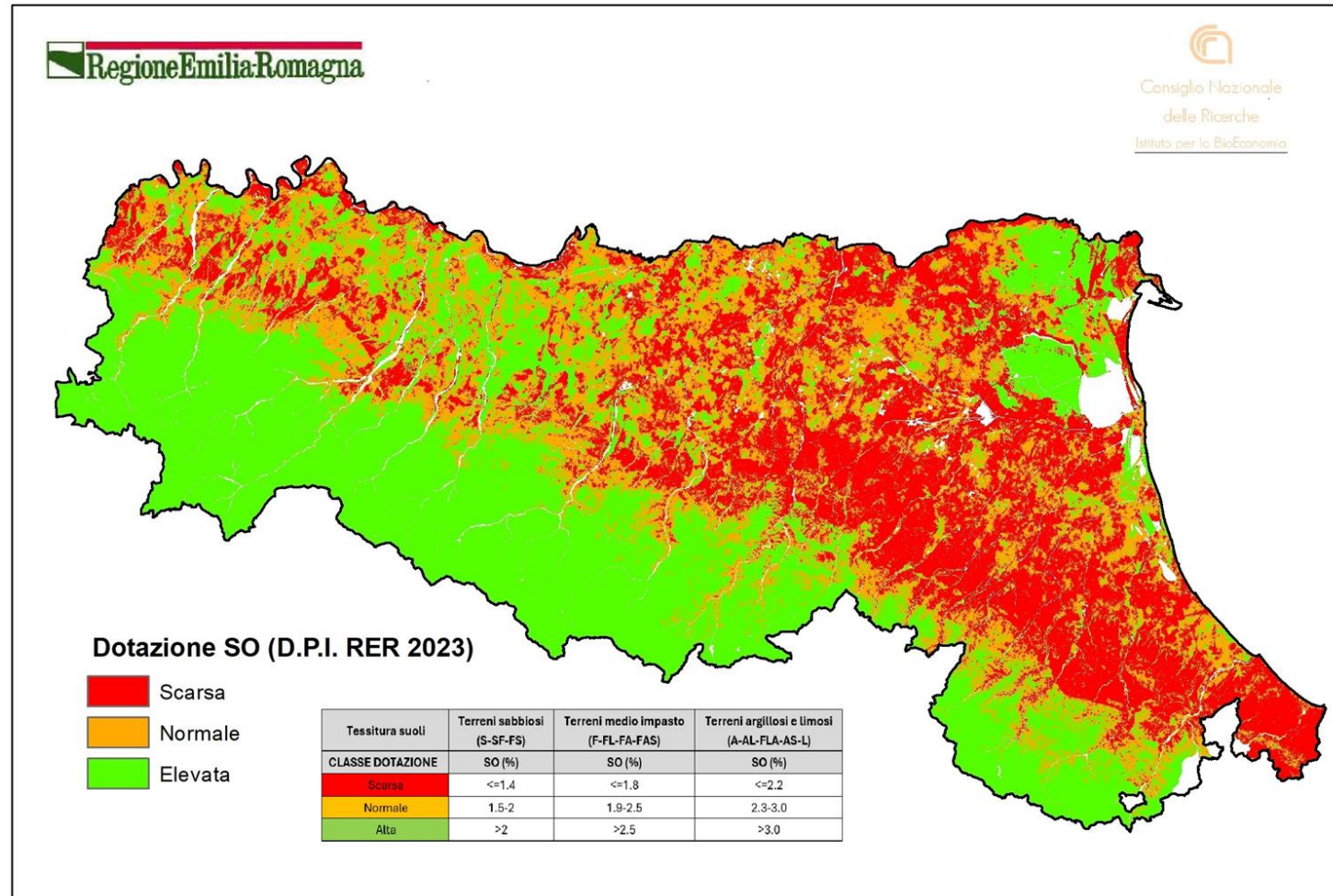


Soil threats: SOC/SOM loss

Flat area

intensive agriculture:
cereals,
tomatoes,
potatoes,
orchards,
vineyards,
alfalfa

SOM % < 1.4-2.2



**CARBON 4
SOIL QUALITY**

**Interreg
Euro-MED**



Co-funded by
the European Union



**PIANO STRATEGICO
DELLA PAC**
IL FUTURO DELL'AGRICOLTURA SOSTENIBILE



**SVILUPPO RURALE
EMILIA-ROMAGNA 2023-27**



How to address Soil Health issues?

Agrienviroment-climate commitments

Direct C-related actions
(C-farming):

- ✓ **Soil improvers**
(farmyard manure, high quality compost)
- ✓ **Conservation agriculture**
(no-till, soil cover, crop rotation)

Indirect actions:

- ☐ **Organic farming**
- ☐ **Integrated production**
- ☐ **Permanent meadows**
- ☐ **Environmental set aside**



**CARBON 4
SOIL QUALITY**

**Interreg
Euro-MED**



Co-funded by
the European Union



PIANO STRATEGICO
DELLA PAC
IL FUTURO DELL'AGRICOLTURA SOSTENIBILE



**SVILUPPO RURALE
EMILIA-ROMAGNA
2023-27**



What about effectiveness? 1/2

Regional Programme 2014-2022 - Independent Evaluation

Operations	Area	SOM increase			SOC increase	
	ha	kg · ha ⁻¹ year ⁻¹	Mg·year ⁻¹	Increase stock SOM (%·year ⁻¹)	kg·ha ⁻¹ year ⁻¹	Mg·year ⁻¹
Integrated	112.674	21	2.331	0,0005	12	1.353
Organic	148.511	31	4.973	0,0008	18	2.886
Soil improvers	12.103	996	11.168	0,025	578	6.482
Conservation agriculture	1.221	1.311	1.601	0,033	761	929
Permanent Meadows	8.124	960	7.799	0,024	557	4.526
Environmental set aside	5.710	451	2.575	0,011	262	1.495
Total	288.098	106	30.838	0,0027	61	17.898



**CARBON 4
SOIL QUALITY**

**Interreg
Euro-MED**



Co-funded by
the European Union



**PIANO STRATEGICO
DELLA PAC**
IL FUTURO DELL'AGRICOLTURA SOSTENIBILE



**SVILUPPO RURALE
EMILIA-ROMAGNA**
2023-27



What about effectiveness? 2/2

Soil Monitoring surveys 2018-2023

(120 sites: conventional vs. AEC)

S. Quality indicators

- Physical-chemical parameters (OC %)
- Biological Quality (s. microarthropods)
- Heavy metals

Organic fertilisers effects on SOC

- 35% cases showing stat. significance
- AEC sites obtain increase with less interventions



**CARBON 4
SOIL QUALITY**

**Interreg
Euro-MED**



Co-funded by
the European Union



PIANO STRATEGICO
DELLA **PAC**
IL FUTURO DELL'AGRICOLTURA SOSTENIBILE



**SVILUPPO RURALE
EMILIA-ROMAGNA**
2023-27



CAP Strategy 2023-27

Million €	Italy	%	Emilia-Romagna	%
BUDGET	36.578			
Rural Development	15.756	39 %	913	100 %
Investments	4.291	27 %	282	31 %
EnvClim	4.570	30 %	326	36 %
AKIS+EIP	1.530	10 %	115	13 %
Organic farming	2.206	14 %	188	21 %
Integrated production	473	3 %	60	7%
Soil improvers	47	0,3 %	13	1,4 %
Conservation agri	204	1,3 %	9	1,0%



**CARBON 4
SOIL QUALITY**

**Interreg
Euro-MED**



Co-funded by
the European Union



**PIANO STRATEGICO
DELLA PAC**
IL FUTURO DELL'AGRICOLTURA SOSTENIBILE



**SVILUPPO RURALE
EMILIA-ROMAGNA
2023-27**



EU-Commission proposal for next CAP

Multiannual Financial Framework 2028-34 proposal:

- National/Regional Partnership Plans (flexibility and self government)
- No more agri specific Funds, but a single Regional F.
- National Coordination enhanced
- More support for small and young farmers
- -20% overall reduction for CAP budget

- enhanced support for environmental and climate actions, ecosystem services, bioeconomy, sustainable agri



**CARBON 4
SOIL QUALITY**

**Interreg
Euro-MED**



Co-funded by
the European Union

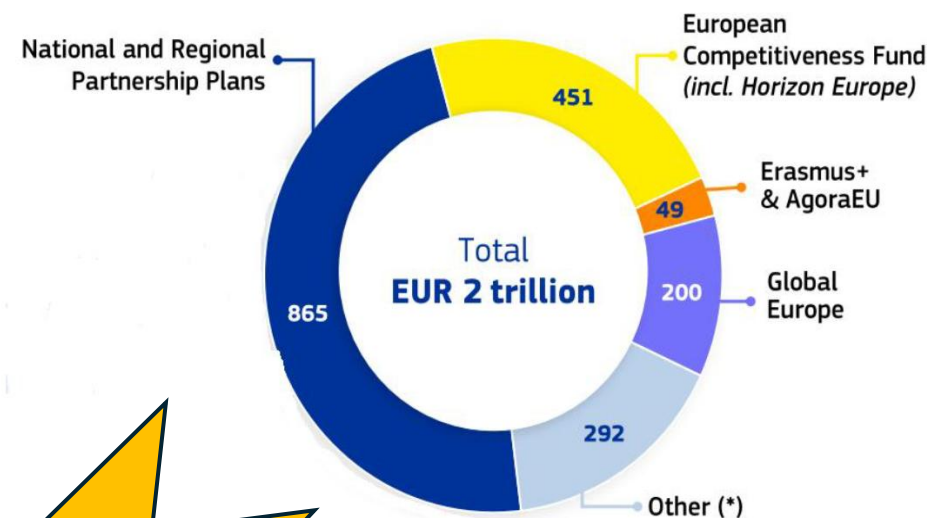


PIANO STRATEGICO
DELLA PAC
IL FUTURO DELL'AGRICOLTURA SOSTENIBILE



**SVILUPPO RURALE
EMILIA-ROMAGNA
2023-27**

The 2028-2034 EU budget



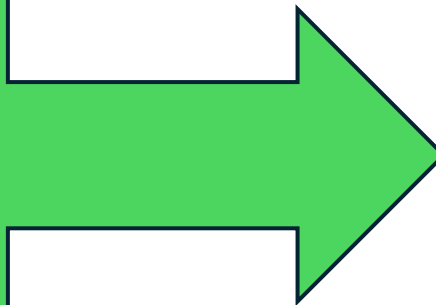
**New Farm
Stewardship**



New farm stewardship

Streamlined support for environmental and climate action

(integrating current ecoschemes and AECM) acting further flexibility



Protective practices	
Area	Practices protecting...
Climate and biodiversity	Carbon-rich soils, wetlands, peatlands and landscape features
	Environmentally sensitive permanent grasslands on agricultural area in Natura 2000 areas
Soil health	Soil from erosion
	Soil potential (soil cover, crop rotation or diversification)
	Soil organic matter (residue management, ban on burning stubble)
Water	Water courses and ground water against pollution and runoff, (inc. via buffer strips)



**CARBON 4
SOIL QUALITY**

**Interreg
Euro-MED**



Co-funded by
the European Union



PIANO STRATEGICO
DELLA **PAC**
IL FUTURO DELL'AGRICOLTURA SOSTENIBILE



**SVILUPPO RURALE
EMILIA-ROMAGNA** 2023-27



New farm stewardship: finalize it!

How to
do that?

- Boost direct C-related **AEC actions**
- **Regenerative** agriculture: integrating existing agroecology certification schemes (organic, integrated) with C farming practices
- Boost Reg Ue 2024/3012 **implementation (C farming)**



**CARBON 4
SOIL QUALITY**

**Interreg
Euro-MED**



Co-funded by
the European Union



**PIANO STRATEGICO
DELLA PAC**
IL FUTURO DELL'AGRICOLTURA SOSTENIBILE



**SVILUPPO RURALE
EMILIA-ROMAGNA**
2023-27



Thank you!

giampaolo.sarno@regione.emilia-romagna.it



**CARBON 4
SOIL QUALITY**

**Interreg
Euro-MED**



Co-funded by
the European Union



PIANO STRATEGICO
DELLA **PAC**
IL FUTURO DELL'AGRICOLTURA SOSTENIBILE



**SVILUPPO RURALE
EMILIA-ROMAGNA 2023-27**